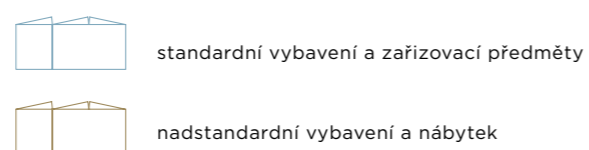


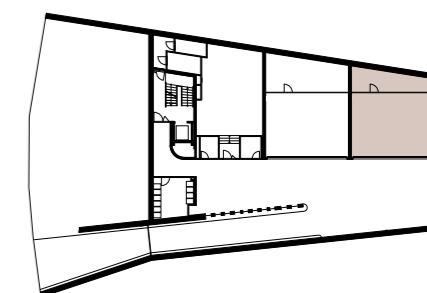


BYT	
podlaží	4.NP
dispozice	4+kk
užitná plocha bytu	184 m ²
podlahová plocha bytu	196 m ²
terasa	25 m ²
vyvýšené záhony	10 m ²

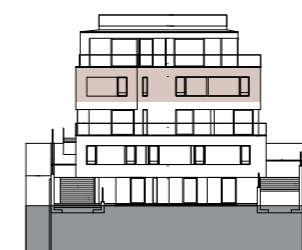
GARÁŽ	
podlaží	1.PP
garáž	3 parkovací stání
hobby místnost	16 m ²



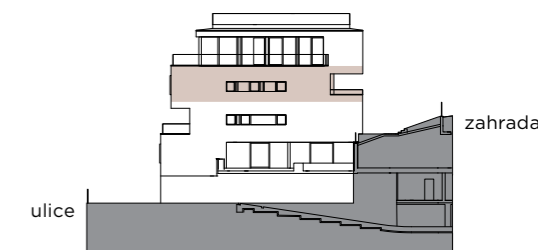
Celková plocha bytu je včetně ploch příček a vnitřních nosných stěn dle vládního nařízení č. 366/2013 Sb. Veškeré materiály a informace jsou pouze orientační. Rozsah dodávky je specifikován ve standardech bytu. Investor si vyhrazuje právo na změnu.



4.NP



pohled z ulice Na Cihlářce



boční pohled

APARTMENT

floor — 4th floor

layout — 4+kk

usable area — 184 m²

floor area — 196 m²

terrace — 25 m²

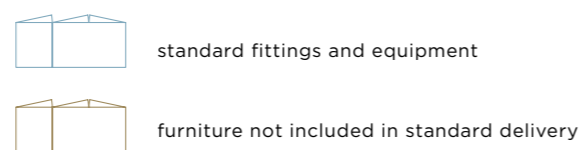
elevated planting — 10 m²

GARAGE

floor — 1st underground

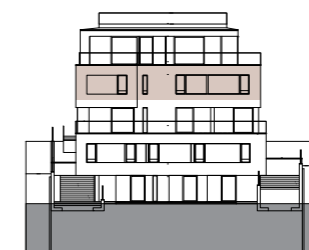
garage — 3 parking places

hobby room — 16 m²

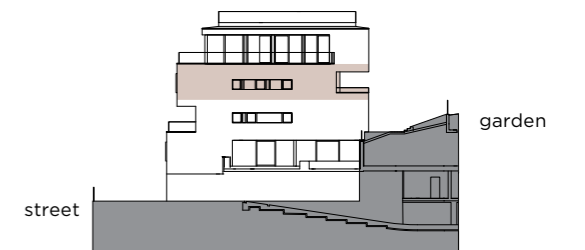
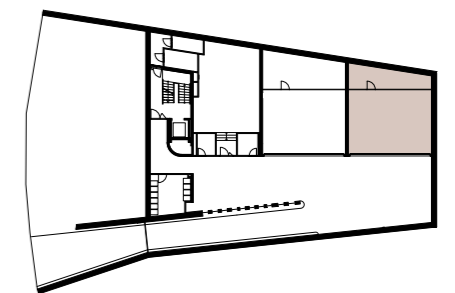


The total area of the apartment includes the areas of partitions and internal load-bearing walls according to Government Regulation No. 366/2013 Coll. All materials and information are indicative only. The scope of delivery is specified in the apartment standards. The investor reserves the right to change.

4th floor



view from Na Cihlářce street



side view