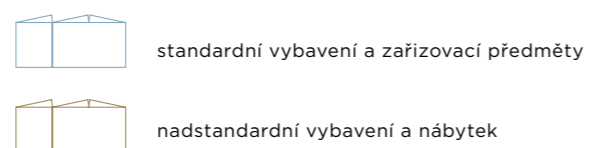


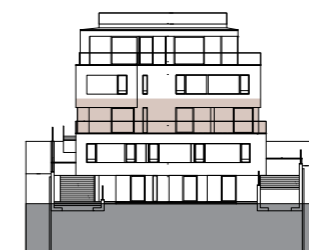


- BYT**
- podlaží — **3.NP**
 - dispozice — **5+kk**
 - užitná plocha bytu — **208 m²**
 - podlahová plocha bytu — **223 m²**
 - terasy — **70 m²**
 - zahrada — **71 m²**

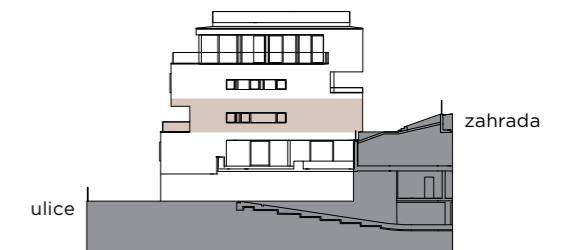
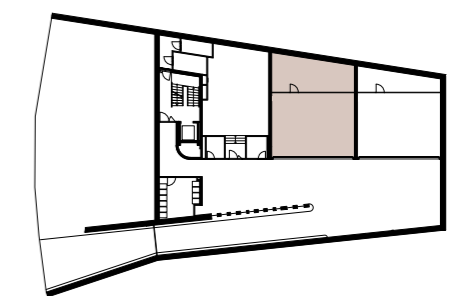
- GARÁŽ**
- podlaží — **1.PP**
 - garáž — **3 parkovací stání**
 - hobby místnost — **27 m²**



3.NP



pohled z ulice Na Cihlářce



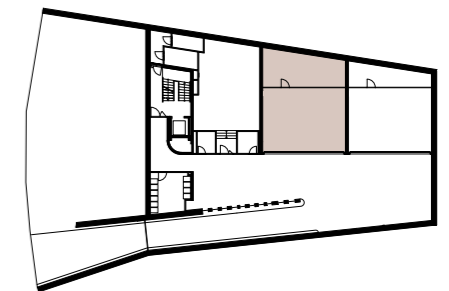
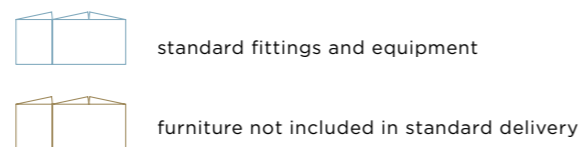
boční pohled

APARTMENT

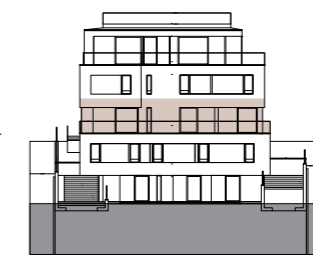
- floor — 3rd floor
- layout — 5+kk
- usable area — 208 m²
- floor area — 223 m²
- terraces — 70 m²
- garden — 71 m²

GARAGE

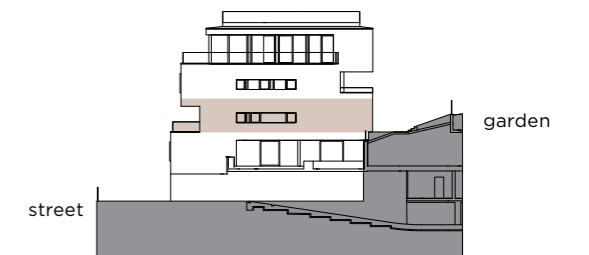
- floor — 1st underground
- garage — 3 parking places
- hobby room — 27 m²



3rd floor



view from Na Cihlářce street



side view