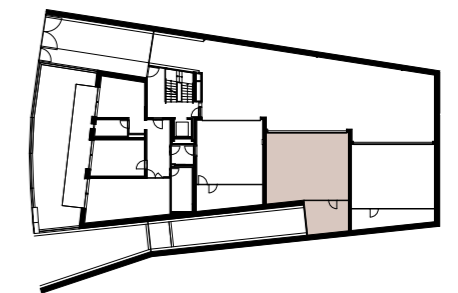
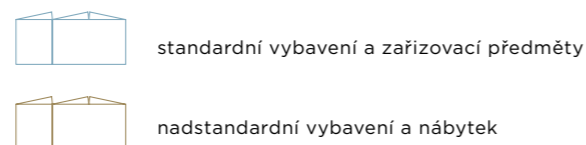


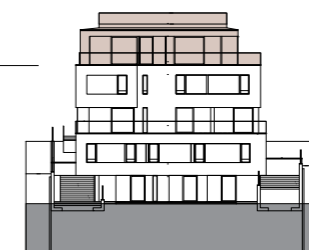
střešní terasa

- BYT**
- podlaží — 5.NP
 - dispozice — 4+kk
 - užitná plocha bytu — 148 m²
 - podlahová plocha bytu — 160 m²
 - terasa — 70 m²
 - střešní terasa a schodiště — 68 m²
 - bazén — 16 m²
 - střešní zahrada — 68 m²
- GARÁŽ**
- podlaží — 1.NP
 - garáž — 3 parkovací stání
 - hobby místnost — 14 m²

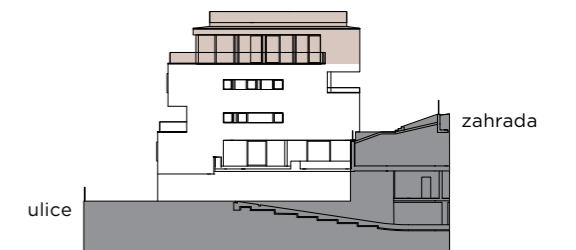
5.NP



5.NP

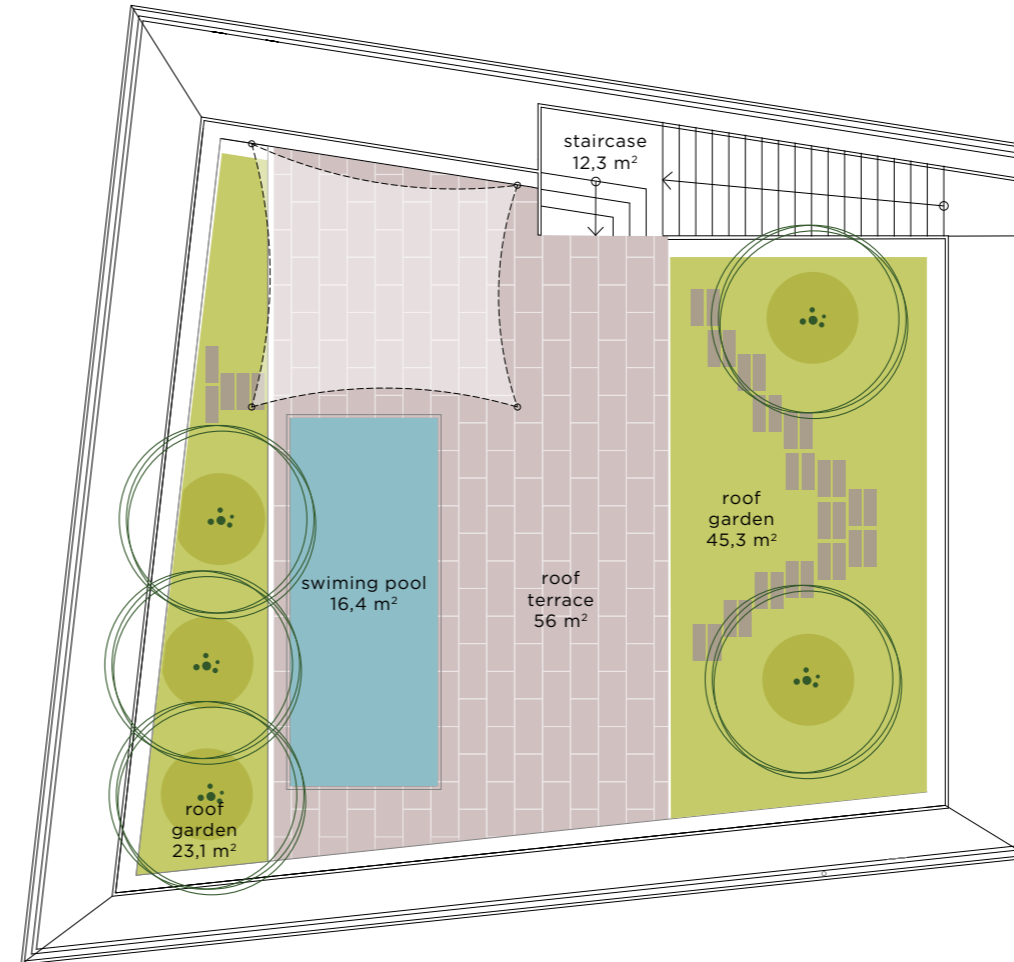


pohled z ulice Na Cihlářce



boční pohled

APARTMENT



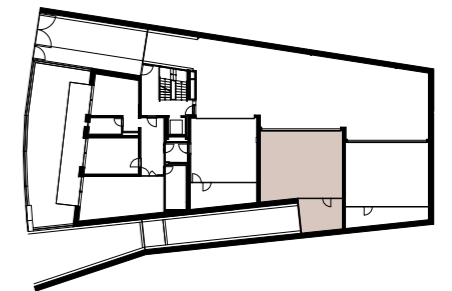
roof terrace

- floor — 5th floor
 - layout — 4+kk
 - usable area — 148 m²
 - floor area — 160 m²
 - terraces — 70 m²
 - roof terrace and stairs — 68 m²
 - swimming pool — 16 m²
 - roof garden — 68 m²
- ## GARAGE
- floor — 1st floor
 - garage — 3 parking places
 - hobby room — 14 m²

5th floor



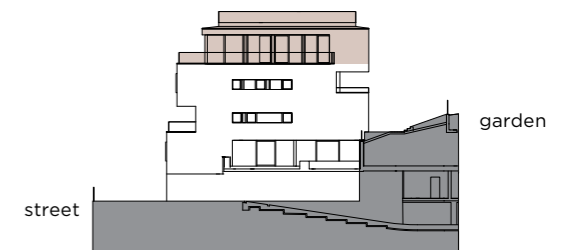
- standard fittings and equipment
- furniture not included in standard delivery



5th floor



view from Na Cihlářce street



side view